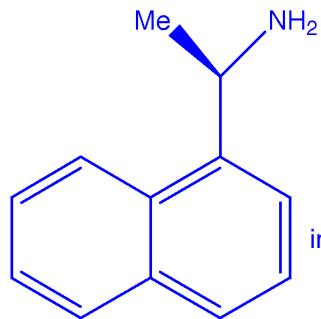


SERVEIS CIENTIFICO-TECNICS

H1 / s2pu1 / Gem-200.DivIII
LOC: #31 / Disolvent: cdc13/ temp ambient
Usuari: q11/ Mostra: amina2
Data: 11/10/01 / Sistema automatic

Pulse Sequence: s2pu1



in deuterated chloroform, 1H, 200 MHz, 298 K

