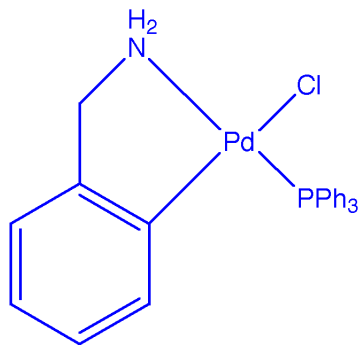


H1 / s2pu1 / Gem-200.DivIII
LOC: # 6 / Disolvent: cdcl3/ temp ambient
Usuari: q11/ Mostra: aminafosfina
Data: 26/10/01 / Sistema automatic
Pulse Sequence: s2pu1



in deuterated chloroform, 1H, 200 MHz, 298 K

