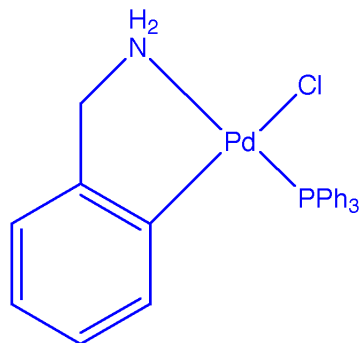


P31 de -100 a 200 ppm
los datos en formato original estan en:
/raid/DATOS/bruker-250/q11/Nov2001/aminafosfina

Pulse Sequence: zgpg30



in chloroform, $^{31}\text{P}\{^1\text{H}\}$, 101,26 MHz, 298 K, external reference, $\text{P}(\text{OMe})_3$

