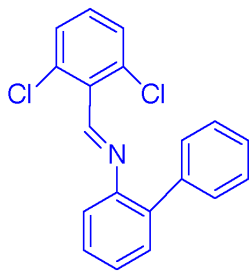


SERVEIS CIENTIFICO-TECNICS

H1 / s2pu1 / Gem-200.DivIII
 LOC: #25 / Disolvent: cdc13/ temp ambient
 Usuari: q11/ Mostra: iminadicloro
 Nom: JOAN ALBERT MACH
 Data: 13/06/03 / Sistema automatic
 Pulse Sequence: s2pu1



in deuterated chloroform, 1H, 200 MHz, 298 K

