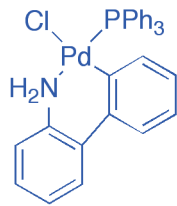
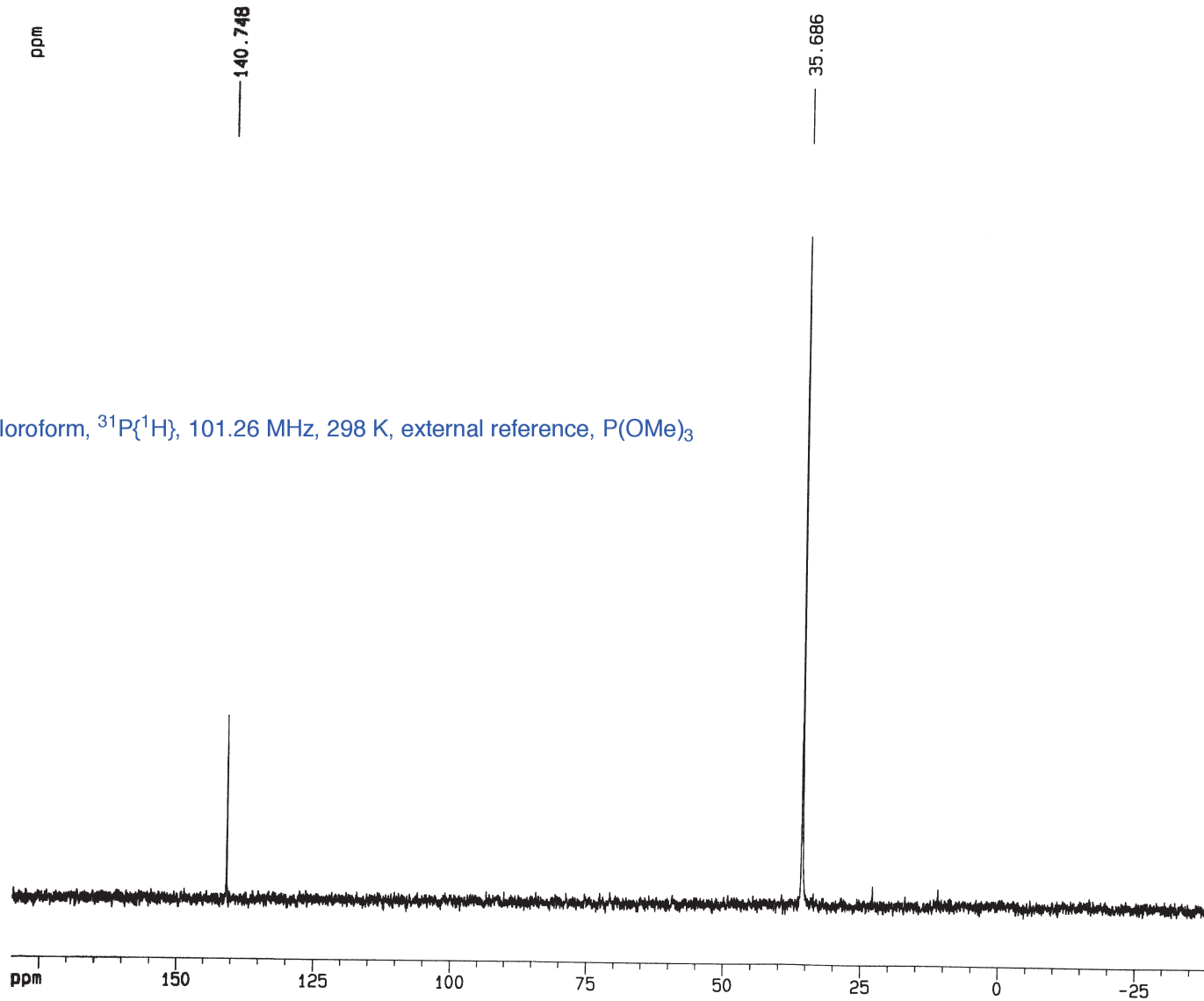


P31 de -100 a 200 ppm
Mostra: capilar fosforic en CDC13
0 ppm



in chloroform, ³¹P{¹H}, 101.26 MHz, 298 K, external reference, P(OMe)₃

Current Data Parameters
NAME joanp
EXPNO 4
PROCNO 1

F2 - Acquisition Parameters
Date_ 20040316
Time 14.34
INSTRUM spect
PROBHD 5 mm Multinu
PULPROG zgpg30
TD 32768
SOLVENT Aceton
NS 167
DS 2
SWH 32051.281 Hz
FIDRES 0.978127 Hz
AQ 0.5112308 sec
RG 8192
DW 15.600 usec
DE 4.50 usec
TE 300.0 K
D1 1.0000000 sec
d11 0.0300000 sec
d12 0.0002000 sec

==== CHANNEL f1 =====
NUC1 31P
P1 5.50 usec
PL1 0.00 dB
SFO1 101.2593550 MHz

==== CHANNEL f2 =====
CPDPRG2 waltz16
NUC2 1H
PCPD2 90.00 usec
PL2 0.00 dB
PL12 18.00 dB
PL13 25.00 dB
SFO2 250.1310005 MHz

F2 - Processing parameters
SI 32768
SF 101.2544182 MHz
WDW EM
SSB 0
LB 3.00 Hz
GB 0
PC 1.40

1D NMR plot parameters
CX 20.00 cm
F1P 180.000 ppm
F1 18225.79 Hz
F2P -40.000 ppm
F2 -4050.18 Hz
PPMCM 11.00000 ppm/cm
HZCM 1113.79858 Hz/cm