

Analysis by TLC

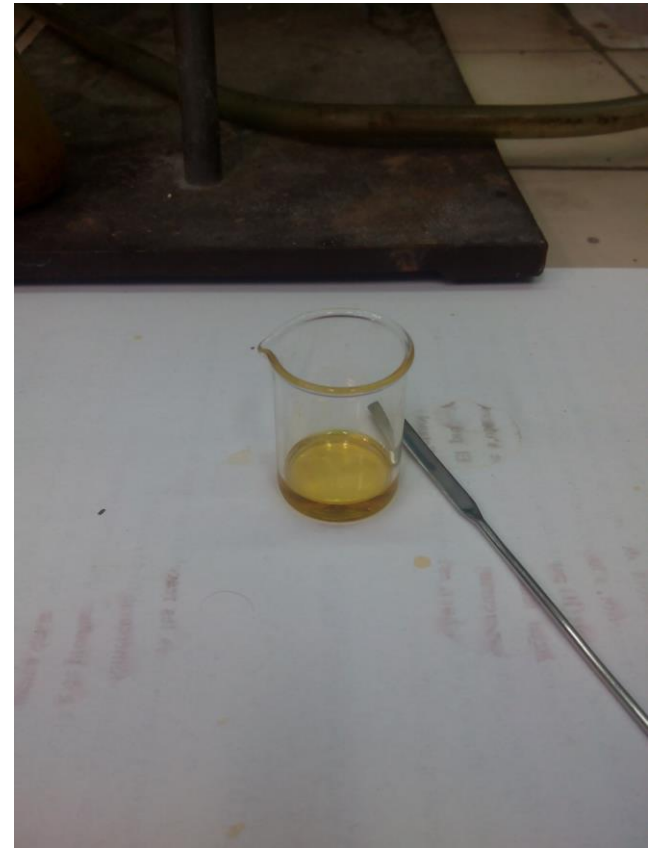
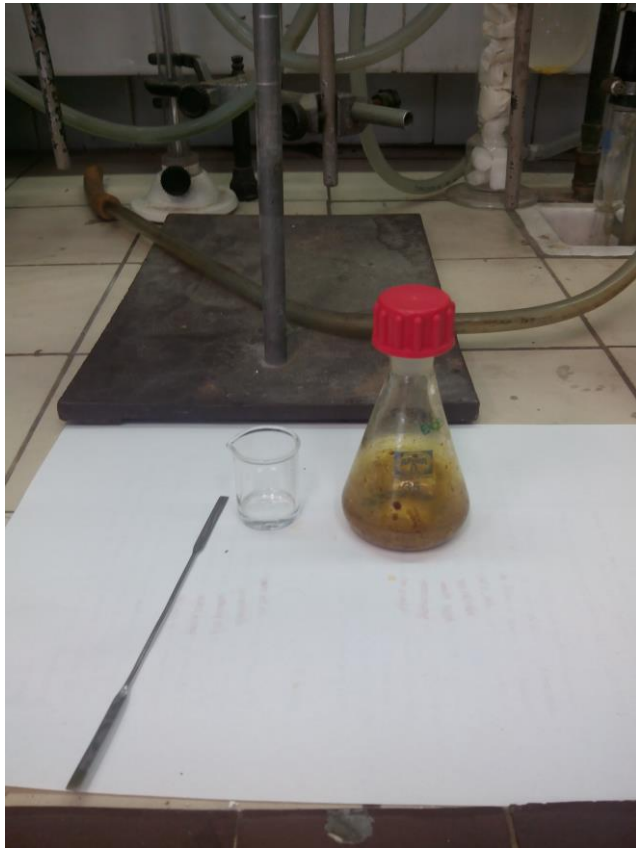
TONI DURÁN MOTA, ALICIA MATE GONZÁLEZ

Material

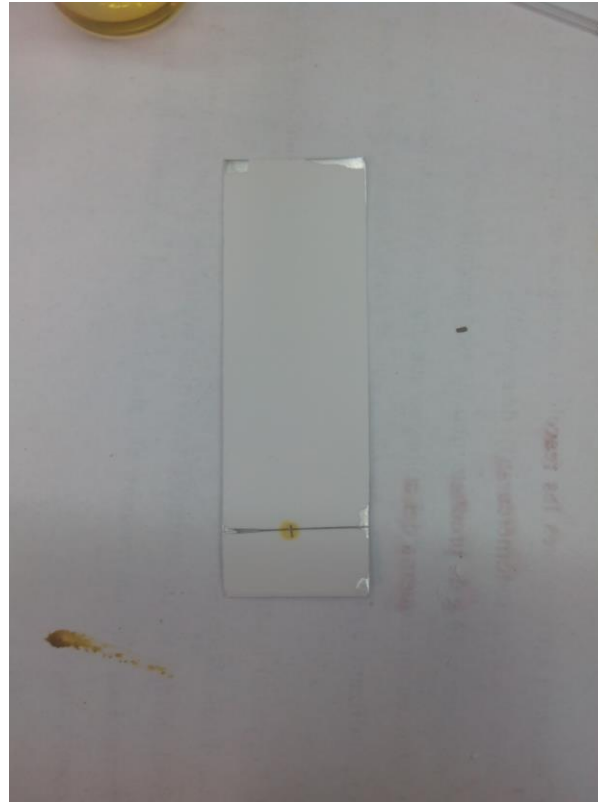


- Silicate plates
- Developer tank with lid
- Mobile phase (CH₂Cl₂/CH₃OH)
- Beaker
- Test tube
- Tweezers
- Reaction crude
- Spatula
- Piston pipettes

Dissolve sample in CH_2Cl_2

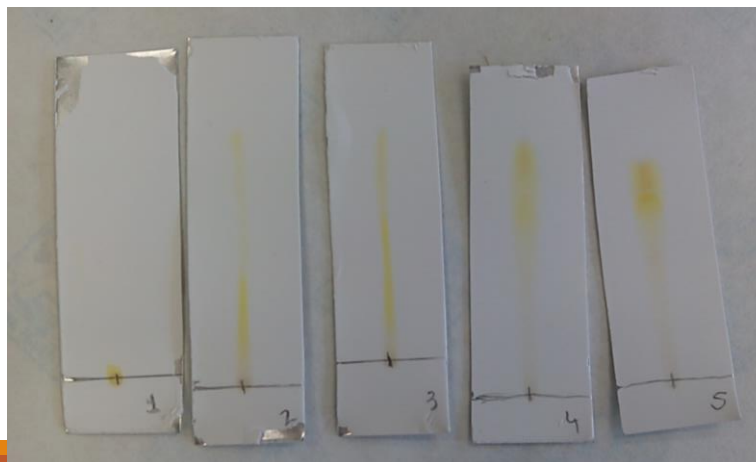


Perform chromatography



Change polarity of mobile phase

Number	CH ₂ Cl ₂ (mL)	CH ₃ OH (mL)
1	10	0
2	10	0,2
3	10	0,4
4	10	0,6
...



Reveal silicate plates

